

## The Watkinson family



Above is the grave, plot F10 in St. Matthew's churchyard, of Samuel Lord Watkinson and his wife Annie Watkinson nee Charteris. But this large and influential Watkinson family have many more connections to Hipperholme and Lightcliffe. This is their story.

Samuel Lord Watkinson's paternal grandfather was a George Watkinson (GW2) the son of George Watkinson (GW1) (there are more George Watsons to come in this write up and so I will number them where necessary) and Mary Holdsworth. Great grandfather George Watkinson (GW1) was a "Woolcomber" from Northowram when he married by licence Mary Holdsworth, also from Northowram, on 28<sup>th</sup> November 1813 at St John's, Halifax. They baptised their son George (GW2) there on 14<sup>th</sup> November 1814 and then a daughter Martha Gibson Watkinson there on 5<sup>th</sup> March 1818. George senior (GW1) was recorded as a "Manufacturer" and then a "Woolstapler" at the respective baptisms.

Martha Gibson Watkinson married Thomas Clark on 14 February 1842 in York. In 1851 he was a "Land and Coal Proprietor". She was a widow in 1881 and died in 1892.

Brother George Watkinson (GW2) married Jane Hebblethwaite, the daughter of Samuel Hebblethwaite, on 14<sup>th</sup> April 1841 at Mirfield and so by census night 6<sup>th</sup> June 1841 the Watkinson newlyweds' household looked like this:-

<u>1841 census</u>		
George Watkinson	25	Woolstapler
Jane Watkinson	25	
Caroline Garfit	15	F.S
Address Lister Lane, Halifax		

Next door was a Ramsden family including George & Jane's future son in law John Taylor Ramsden

In the next decade George and Jane Watkinson had five children; three boys and two girls. Four children were baptised at St. John's, Halifax, Mary Jane, born 23<sup>rd</sup> July 1842, on 25<sup>th</sup> September 1842, George (GW3), born 4<sup>th</sup> September 1843, on 31<sup>st</sup> December 1843, John, born 6<sup>th</sup> November 1845, on 11<sup>th</sup> January 1846 and Samuel born 9<sup>th</sup> October 1848 on 24<sup>th</sup> August 1849 – when their father was a “Woolstapler” and their abode was Southowram and then Halifax. Baby Emma's birth was recorded in Q4 1850, but she was not baptised until 16<sup>th</sup> October 1851. On 30<sup>th</sup> March 1851 the older sons were not with the family but were boarding nearby.

1851 census

George Watkinson	Head	36
Wool Stapler & Farmer employing 7 men		
Jane Watkinson	Wife	40
Mary Jane Watkinson	Dau	8
Samuel Watkinson	Son	2
Emma Watkinson	Dau	4 Mo
Ellen Haley	Visitor	37
Samuel H Hebblethwaite	Servant	17
Lydia Shuttleworth	Servant	21
Frances Atkin	Nurse	12
Address Lower Brear, Northowram		

1851 census

Thomas Drake	Head	62	Farmer
Mary Drake	Wife	55	
Catherine Ann Drake	Dau	17	School Teacher
Jessica Drake	Dau	16	
Olivia Drake	Dau	13	
Mary Kershaw	Servant	24	
Joseph Clark	Boarder	7	Scholar in the House
George Watkinson	ditto	7	ditto
John Watkinson	ditto	5	ditto
William Pullan	ditto	8	ditto
Address Leeds Road, Wike			

George and Jane baptised a son, Frederick, on 15<sup>th</sup> April 1852 but buried him in either 1853 or 1855 although no burial record has been found. Their youngest child, Fanny Watkinson, was born on 24<sup>th</sup> November 1853 and baptised at St. John's, Halifax on 6<sup>th</sup> December 1855. She should be on the 1861 census but along with her sisters, Mary Jane and Emma, has not been found. Brother John was also away from home at Stetton Hall School in Keighley, but George was back home working for his father.

1861 census

George Watkinson	Head	46	Wool Stapler and Farmer
Jane Watkinson	Wife	50	
George Watkinson	Son	17	Wool Stapler
Samuel Watkinson	Son	12	Scholar
Susannah Law	Servant	23	House Servant
Grace Willis	Servant	16	House Servant
Address Lower Brear Farm, Northowram, Halifax			

By 1871 the family had moved into Woodfield, Hipperholme built for George Watkinson (GW2) by George Hepworth. All three sons were heavily involved in the wool and coal trades with their father who by then had established Geo Watkinson & Sons.

1871 census

George Watkinson	Head	56	Wool Merchant and Land owner
Jane Watkinson	Wife	60	
George Watkinson	Son	27	Wool Merchant
John Watkinson	Son	25	Coal Proprietor
Sam Watkinson	Son	22	Wool Sorter
Martha Clark	Visitor	52	
Hannah Beaumont	Servant	20	
Jane Shlckett	Servant	19	
Address <b>Woodfield, Lightcliffe, Hipperholme cum Brighouse</b>			



### **Woodfield House**

Again, note that on the night of 2<sup>nd</sup> April 1871 no daughters were at home. 21-year-old Emma was lodging in Cold Bath Road, Pannal, Harrogate with her younger sister Fanny Watkinson. There is a Q4 1851 death in Halifax for a Mary Jane Watkinson which could well be George and Jane's eldest daughter. The "Visitor" Martha Clark was the sister of George (GW2). It is not clear as to whether she was a widow by then.

### **The Watkinson Marriages**

The next decade would see the marriages of all three Watkinson brothers. George Watkinson (GW3) married Alice Mary Cockroft in Q3 1871. Then later that year on 14<sup>th</sup> November 1871 23-year-old Samuel Watkinson married 22-year-old Sarah Ann Bottomley at St. Nicholas' Church, Shelf. He was a "Woolstapler" from Shelf. Sarah Ann was the daughter of "Manufacturer" James Bottomley from Buttershaw. Four years later "Coal Merchant" John Watkinson of Brook Park, Northop, Flintshire married Mary Ann Sutcliffe on 13<sup>th</sup> January 1875 at Heptonstall, Halifax. Twenty-year-old Mary Ann was the daughter of "Gentleman" John Sutcliffe.

Emma Watkinson never married but her younger sister Fanny Watkinson did on 29<sup>th</sup> May 1878 at St. John's Church, Coley. Her husband was John Taylor Ramsden of Ovenden, son of Thomas Ramsden, both father and son were Brewers.

George and Alice Mary Watkinson registered the birth of four children in the Halifax district – presumably born at Woodfield House, Lightcliffe - before the next census but at least three of them seem to have been baptised in Newchurch in Rossendale, Lancashire, perhaps a second home or where their maternal grandparents were from. Sons, George (GW4) and Samuel Lord, were born on 8<sup>th</sup> July 1872 and 27<sup>th</sup> January 1874 but baptised in Lancashire on 27<sup>th</sup> September 1872 and 10<sup>th</sup> April 1874 respectively. Daughter Ethel Mary was born in 1875 but no baptism record has been found either in Lancashire or Yorkshire. Alice Helena was baptised in Lancashire on 25<sup>th</sup> August 1876 having been born on 23<sup>rd</sup> June 1876

Meanwhile Samuel and Sarah Ann Watkinson had also had four children, Annie, Jane, James Bottomley and Samuel. They were all baptised at St John, Coley; Annie on 4 April 1874, Jane on 26<sup>th</sup> Jan 1876, James Bottomley on 9<sup>th</sup> Oct 1878 and another Samuel on 19<sup>th</sup> March 1880. Father Samuel was a “Woolstapler” with address usually Northowram – once Lower Brear his father’s former home – and once Hipperholme.

John and Mary Ann Watkinson, despite living at Brook Place, Flintshire, Wales baptised their son Frederick born on 9<sup>th</sup> August 1879 and their daughter Fanny born in 1881 at St. Matthew’s Church, Lightcliffe on 23<sup>rd</sup> October 1879 and 2<sup>nd</sup> September 1881 respectively. Their eldest daughter, Marian, was born at Brook Park on 20<sup>th</sup> November 1875 and baptised in Flintshire on 14<sup>th</sup> December 1875. Eldest son John was born in Wales in Q1 1877, but no baptism record has been found.

Fanny and John Taylor Ramsden’s sons, George Taylor and John Watkinson Ramsden, were born at Jumples House, Ovenden on 6th April 1879 and 1880 and baptised at St. Mary’s Church, Illingworth on 29<sup>th</sup> May 1879 and 13<sup>th</sup> October 1880.

Emma Watkinson was back home with her parents on Sunday 3<sup>rd</sup> April 1881 and so the family’s census records looked like this.

1881 census

George Watkinson	Head	67
	Retired Merchant	
Jane Watkinson	Wife	70
Emma Watkinson	Dau	30
Sarah M Davies	Servant	18
Elizabeth Hintor	Servant	16
Address <b>Woodfield, Lightcliffe, Hipperholme cum Brighouse</b>		

1881 census

George Watkinson	Head	37
	Wool Merchant	
Alice M. Watkinson	Wife	33
George Watkinson	Son	8
Sam L. Watkinson	Son	7
Ethel M. Watkinson	Dau	5
Alice H. Watkinson	Dau	4
Sarah Sysett	Servant	29
Mary Ford	Servant	
Elizabeth Wright	Servant	20
Address <b>Woodfield, Lightcliffe</b>		

1881 census

John Watkinson	Head	35	Colliery
	Proprietor employing 800 men also		
	Farmer of 27 acres employing 1 man		
Mary Ann Watkinson	Wife	27	
Marian Watkinson	Dau	5	Scholar
John Watkinson	Son	4	Scholar

Frederick Watkinson	Son	1
Fanny Watkinson	Dau	3 weeks
Elizabeth Carter	Servant	38 Nurse
Lucy Daniel	Servant	29 Housemaid
Address Brook Park, Northop, Flintshire, Wales		

1881 census

Saml. Watkinson	Head	32
	Woolstapler	
Sarah Ann Watkinson	Wife	31
Annie Watkinson	Dau	7 Scholar
Jane Watkinson	Dau	5 Scholar
James B. Watkinson	Son	2
Saml. Watkinson	Son	1
Sarah Bingham	Servant	16 Nurse
Arthur Bingham	Servant	12 ???
Ann Ledger	Servant	16 Cook
Address Northowram		

1881 census

John Taylor Ramsden	Head	45
	Common Brewer	
Fanny Ramsden	Wife	27
George Taylor Ramsden	Son	1 yr 11 months
John Watkinson Ramsden	Son	6 months
Annie Walker	Servant	21 Cook
Ada Abson	Servant	16 House Maid
Address <b>Jumples House, Ovenden, Halifax</b>		

More Watkinson and Ramsden grandchildren were born in the decade 1881 to 1891. George and Alice Mary Watkinson had another son, Harold Myers, born on 15<sup>th</sup> March 1882 in Halifax and baptised on 12<sup>th</sup> May 1882 again at Newchurch in Rossendale but just over a year later his death was recorded in the Haslingden district of Lancashire. John and Mary Ann Watkinson of Brook Park, Wales had two more sons, Herbert born 2<sup>nd</sup> July 1882 and Arthur born 21<sup>st</sup> March 1884, and then a daughter Maud on 14<sup>th</sup> July 1885. All three were baptised at Northop, Herbert on 19<sup>th</sup> July 1882 and both Arthur and Maud on 3<sup>rd</sup> August 1885. Eight-month-old Maud was buried at the same church on 23<sup>rd</sup> March 1886. Samuel and Sarah Ann Watkinson of Northowram baptised Alfred on 12<sup>th</sup> October 1881 and Sarah Ellen on 29<sup>th</sup> September 1886 at St John's Church, Coley. They then moved to Holroyde House, Priestley Green.



**Holroyde House, Priestley Green**

Thomas, Maud, Mary Winifred and then Edward Ramsden were born at **Jumples House** on 14<sup>th</sup> January 1882, 23<sup>rd</sup> October 1883, 15<sup>th</sup> June 1886 and 7<sup>th</sup> August 1890 and baptised on 2<sup>nd</sup> June 1882, 30<sup>th</sup> November 1883, 1<sup>st</sup> October 1886 and 14<sup>th</sup> September 1890 at St. Mary's Church, Illingworth, Halifax.

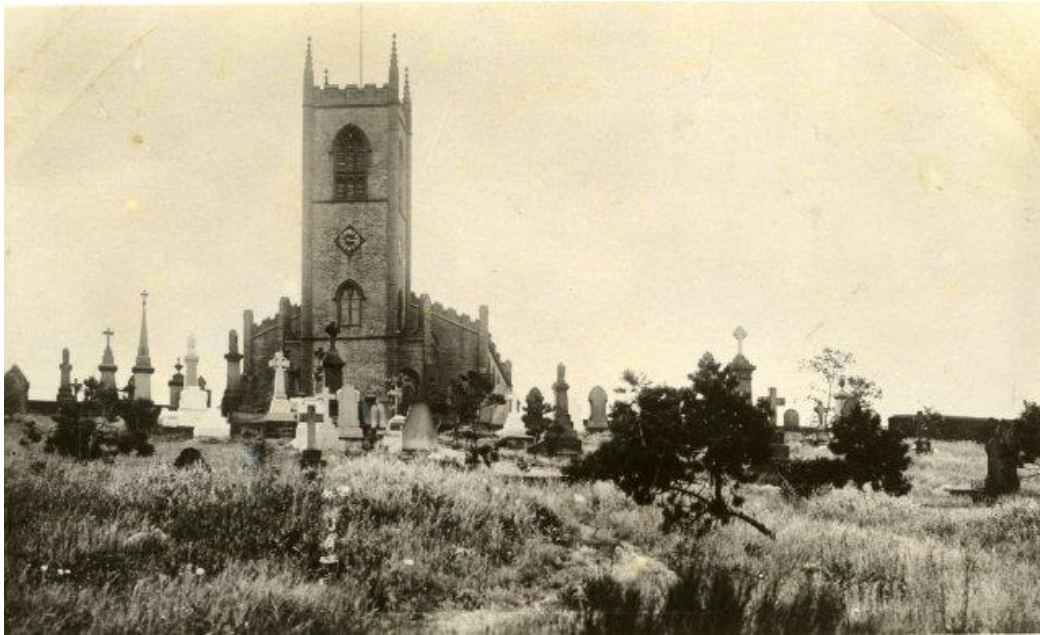
**Jumples House,**

the home of the Ramsdens, during demolition in 1971 (from Malcolm Bull's Calderdale Companion) obviously not looking its grandest.





The children's grandmother, Jane Watkinson nee Hebblethwaite, wife of George Watkinson, the elder (GW2) died aged 79 years on 18<sup>th</sup> February 1890 and was buried at St.John's Church, Coley on 21<sup>st</sup> February 1890. This was the church where many of the Watkinsons' baptisms and funerals took place. It was also the church that Rev. George Watkinson (GW4) would become curate of before he became vicar of St.Matthew's Northowram – See later notes.



**St.John's Church, Coley**

On the night of the 1891 census, Sunday 5<sup>th</sup> April, many of the grandsons of George Watkinson (GW2) were at boarding school. George (GW4), his brother Samuel Lord and his cousin James Bottomley Watkinson were all at Sedburgh School, Yorkshire. Brothers George Taylor and John Watkinson Ramsden were at a school in Westbury, Bristol and their little brother Thomas Ramsden was at a school in Lytham St Anne's, Lancashire.

George and Samuel Lord Watkinson's sisters, Ethel Mary and Alice Helena Watkinson, were also boarding at a school in Mount Vale, York. This may well have been because they lost their mother, Alice Mary Watkinson nee Cockcroft, on 26<sup>th</sup> March 1889. Her death was recorded in the Lancashire district of Haslingden where her birth and marriage were also recorded. She was buried at St Nicholas's Church, Newchurch, Rossendale aged just 41 years old.

Administration of the Personal Estate of Alice Mary Watkinson (wife of George Watkinson the Younger) late of Woodside Hipperholme in the Parish of Halifax in the County of York who died 26 March 1889 at Ashlands Newchurch – in – Rossendale in the County of Lancashire was granted at the Principal Registry to the said George Watkinson of Woodside Woolstapler. Personal Estate £272 8s 7d.

This left the many Watkinson related families looking like this on 5<sup>th</sup> April 1891.

1891 census

George Watkinson Head 76  
 Widower living on own means  
 Emma Watkinson Dau 40  
 Jane Parry Servant 24  
 Mary J Millington Servant 22  
 Address **Woodfield House, Lightcliffe,  
 Hipperholme cum Brighouse**

1891 census

George Watkinson Head 47  
 Widower Wool Merchant  
 Mary P Godfrey Lady 48  
 House Keeper  
 Elizabeth J Legge Servant 21 Cook  
 Isabella R Legge Servant 19 Maid  
 Address Woodside, Hipperholme cum  
 Brighouse

1891 census

John Watkinson Head 45  
 Magistrate & Colliery Proprietor  
 Mary A Watkinson Wife 37  
 Herbert Watkinson Son 8  
 Arthur Watkinson Son 7  
 Jane Davies Servant 24 Cook  
 Mary Griffiths Servant 17 Housemaid  
 Amy Jones Servant 17 Nurse  
 Address Brook Park, Northop, Flintshire,  
 Wales

1891 census

Samuel Watkinson Head 42  
 Wool Merchant  
 Sarah Ann Watkinson Wife 40  
 Samuel Watkinson Son 11 School Boy  
 Alfred Watkinson Son 9 School Boy  
 Sarah Ellen Watkinson Dau 4  
 Camellia Booth Servant 17 Housemaid  
 Jessie Ann Armytage Servant 17 Cook  
 Address **Holyroyd House, Priestley Green,  
 Hipperholme cum Brighouse**

1891 census

John Taylor Ramsden Head 55  
 Common Brewer  
 Fanny Ramsden Wife 36  
 Maud Ramsden Dau 7  
 Mary Winfred Ramsden Dau 4  
 Edward Ramsden Son 8/12  
 Alice Gertrude Rixon Servant 22 Governess  
 Ellen Fieldsend Servant 27  
 Address **Jumples House, Ovenden, Halifax**

By the time of the 1901 census the widower, George Watkinson (GW2) “the Elder” was still alive and living with his unmarried daughter Emma at Woodfield House. The family of his eldest son, widower George Watkinson (GW3) “the Younger”, a wool merchant, were back together and living at The Grange Lightcliffe.



**The Grange Lightcliffe**







Malcolm Bull's Calderdale Companion

**George Watkinson (29<sup>th</sup> October 1814 - 29<sup>th</sup> May 1903)**

Eighty-eight year old father George Watkinson (GW2) died on 29<sup>th</sup> May 1903 and was buried at St.John's, Coley on 2<sup>nd</sup> June, presumably with his wife Jane.

Watkinson George of "Woodfield" Hipperholme near Halifax died 29 May 1903 Probate London 15 August to Samuel Watkinson woolstapler, John Taylor Ramsden brewer and George Watkinson woolstapler. Effects £ 125 141 16s 7d.

Now read more about George Watkinson's sons and daughters

**George Watkinson the Younger**  
**John Watkinson Colliery owner**  
**Samuel Watkinson of Shelf Hall**  
**Emma Watkinson of Longlands**  
**Fanny Watkinson and the Stone Trough Brewery**

D.M.Barker  
October 2018